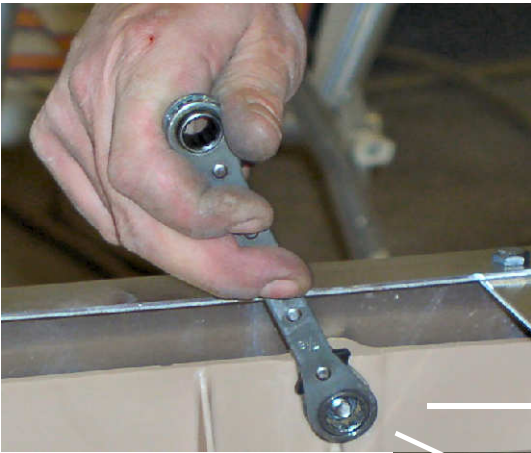
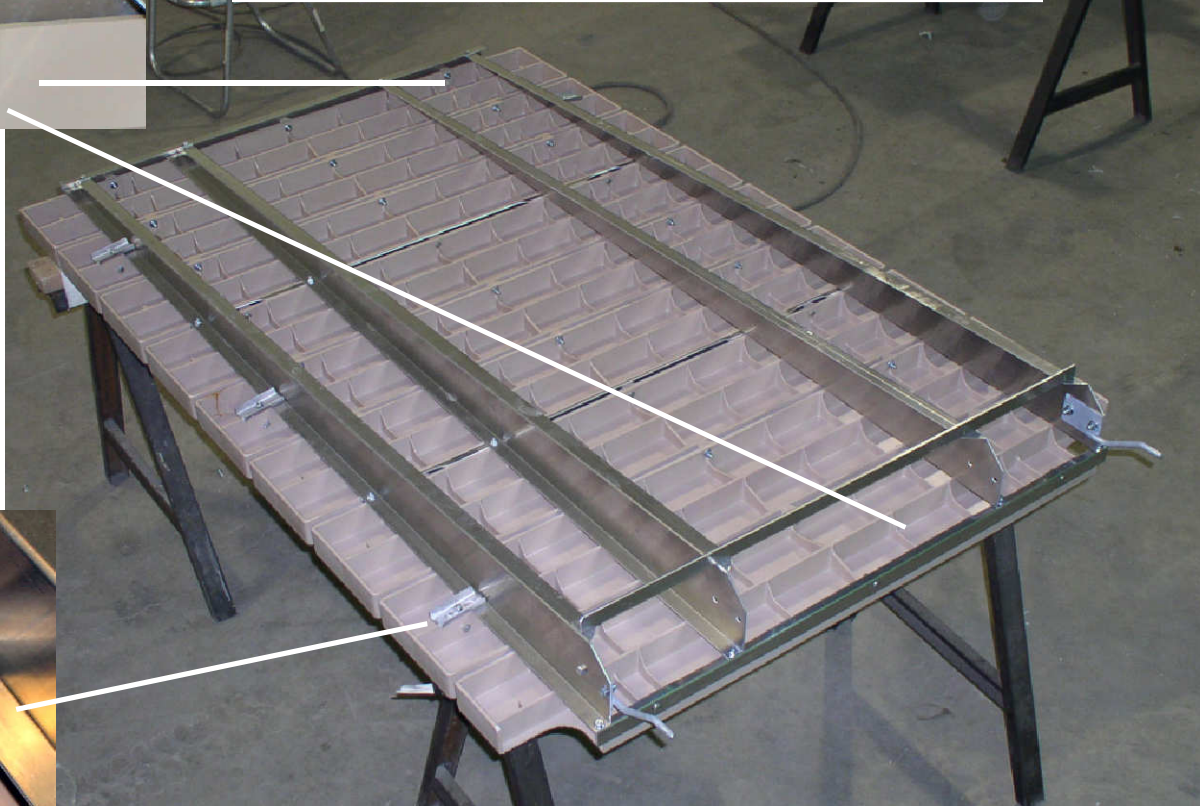


10' Ramp Extension



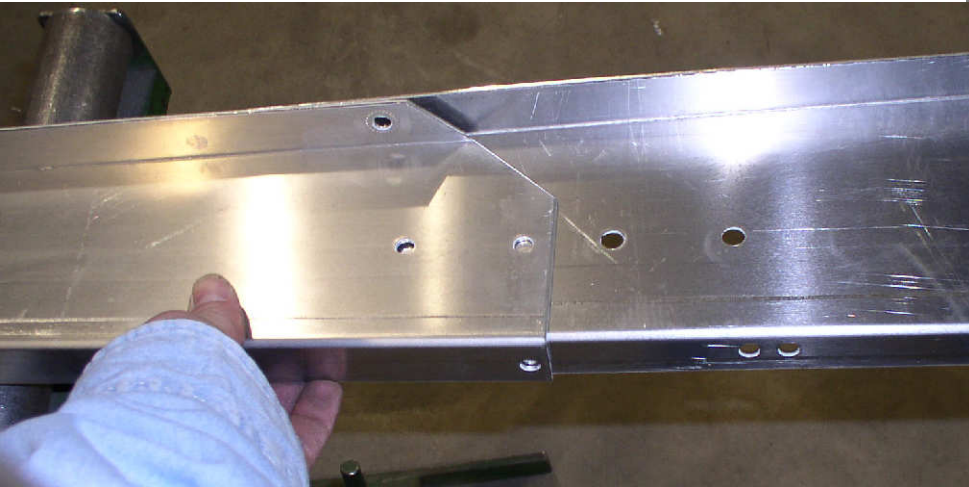
Remove decking as shown



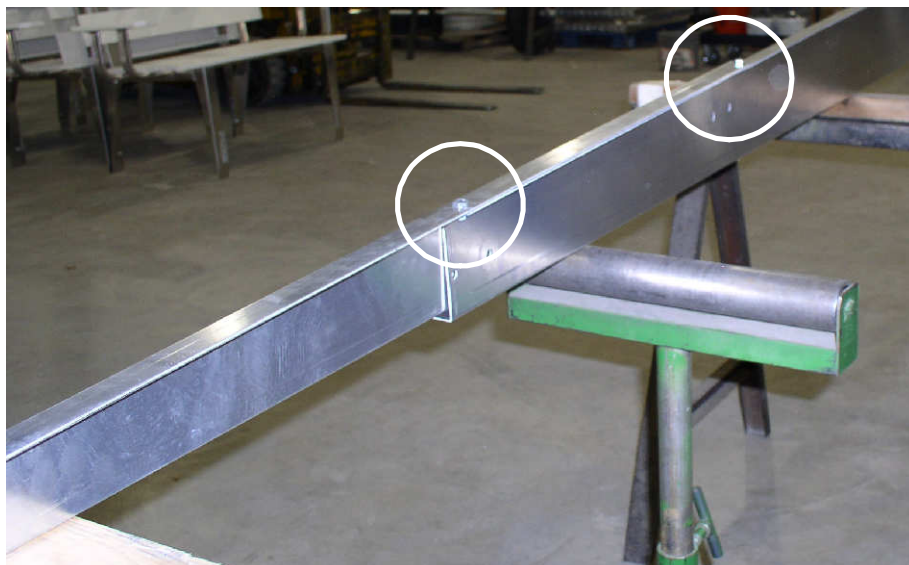
10' Ramp Extension page 2



Remove all crossmembers and parts until you are left with the four ramp beams

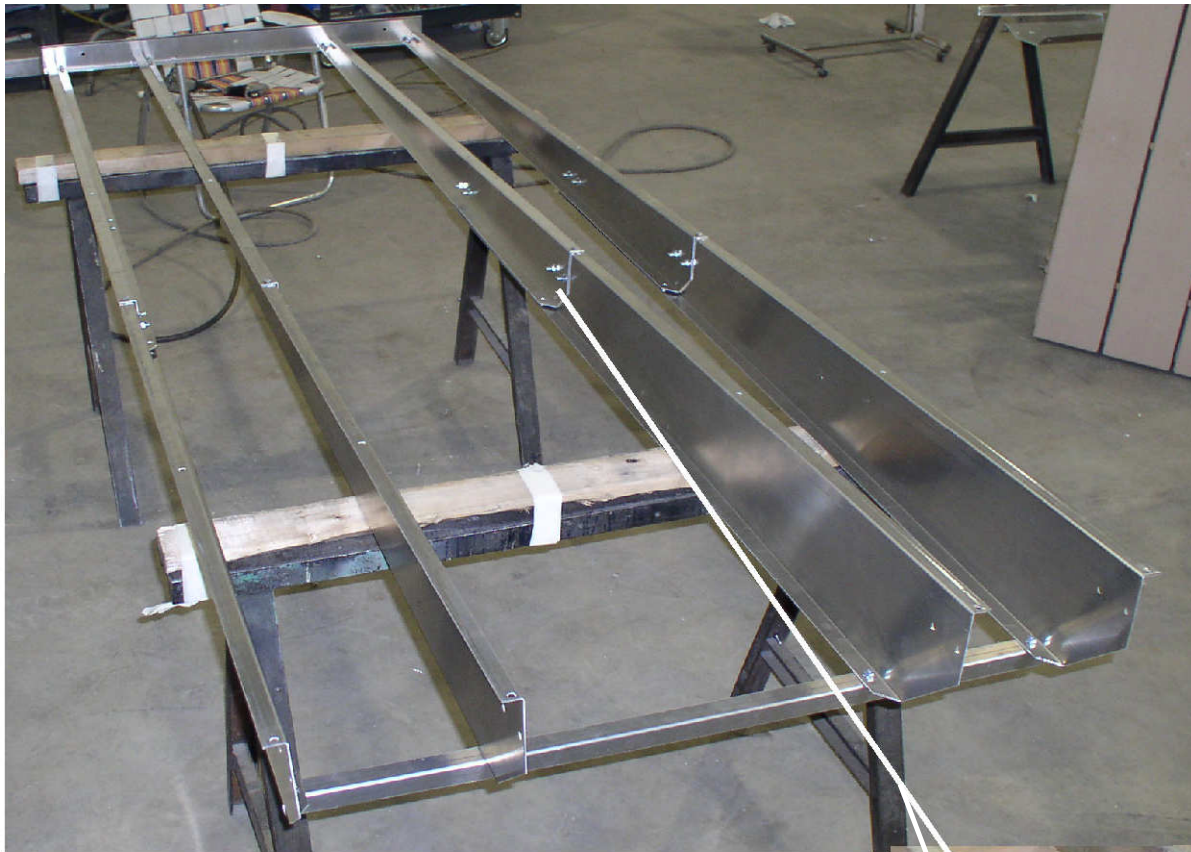


Connect the existing ramp beam to the 10' extension. Fasten with two 1/4" bolts and flange nuts fasten on the top only.



10' Ramp Extension page 3

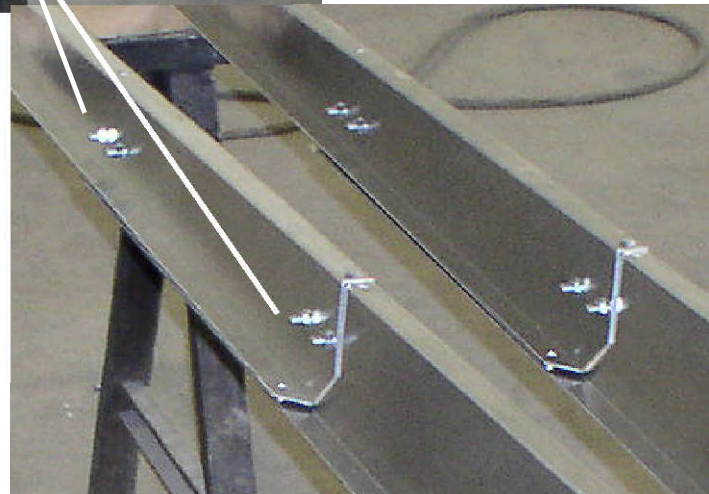
When frames are fastened you may need to drill holes on the side of the beams if the holes do not line up.



Fasten the remaining beams together. Align 4 beams as shown refasten bottom member and starter plate.

Note: Beams are left & right beams.

Bolt frames together with four 5/16 hex head bolts & flange nuts



10' Ramp Extension page 4



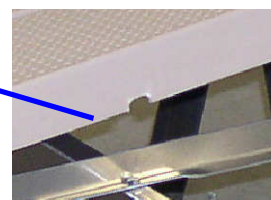
Fasten crossmembers as shown.

**Fasten ramp pins
as shown**



Reinsert panels as shown.

**Note: Use the panel with
notches cut under the
decking, place that in the
3rd slot.**



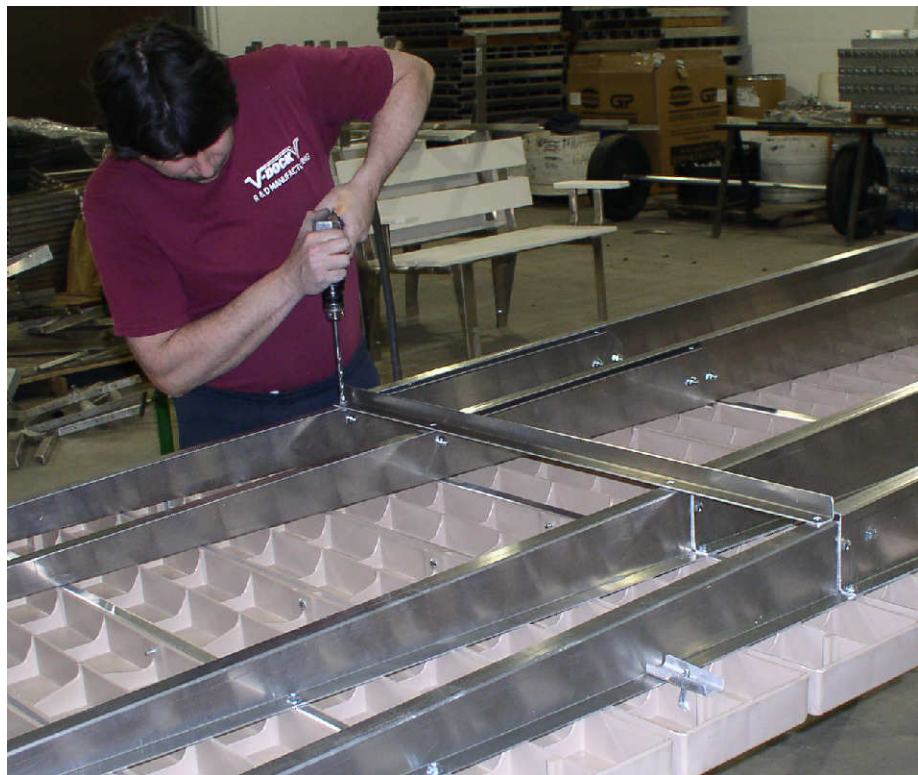
10' Ramp Extension page 5



Refasten all bolts



Drill four holes in ramp beams near where the 6' beam meets with the 10' beam. Fasten bottom brace with four 5/16 bolts and flange nuts



Finished !