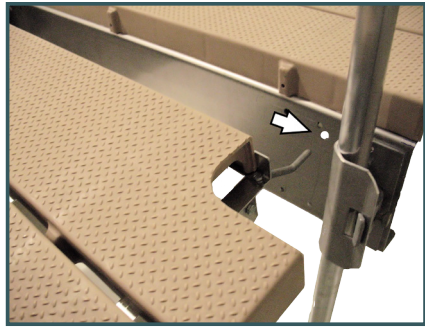
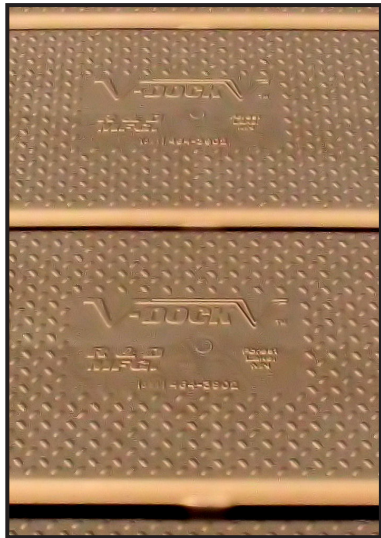




Post Sectional & Roll-n-Float Instructions

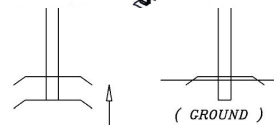


Slide 6' or 10' ramp pins into holes.
Allows ramp to angle up or down

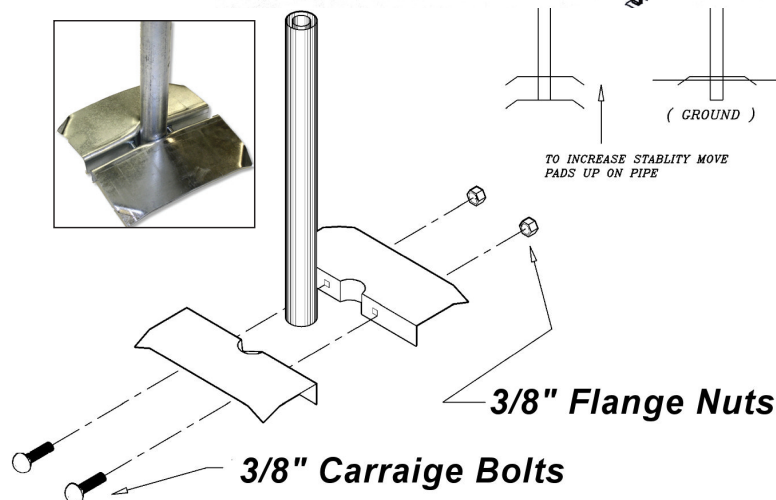


As you walk on your V-Dock you should be able to read the logo on the decking as you walk out towards the lake.

Foot Pad Instructions



TO INCREASE STABILITY MOVE
PADS UP ON PIPE

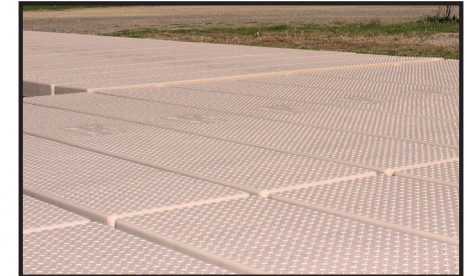


3/8" Flange Nuts

3/8" Carriage Bolts

Hanger Bracket Instructions

Hanger brackets are designed to slide in between deck boards and hook directly to V-Dock's mainframe.
Sections to be mounted in 2 foot increments.



Post Bracket Instructions

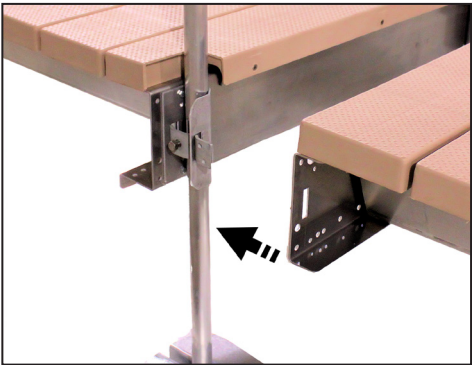
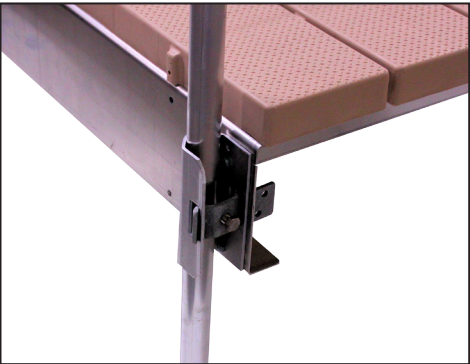
Using a 3/4" wrench remove or install posts from this simple "U" shaped bracket.



Connecting Sections Together

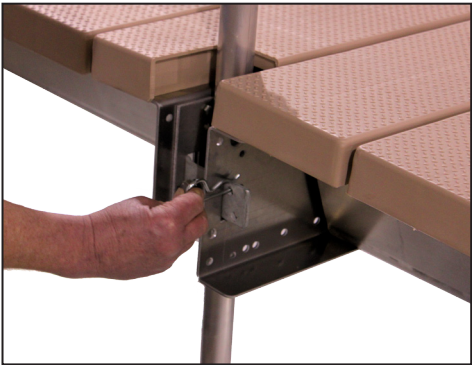
Begining Section

Longer end of the post bracket is facing inside the dock section



To Connect One Dock to Another

Rotatate the post bracket lug so the longer end sticks out.



Slide & Snap

Slide the square hole into the longer end of the post bracket lug. Slide snap pin into post bracket lug to keep the sections together

Last Section

Rotate lug so the longer part of the post bracket is sticking inside the dock.

