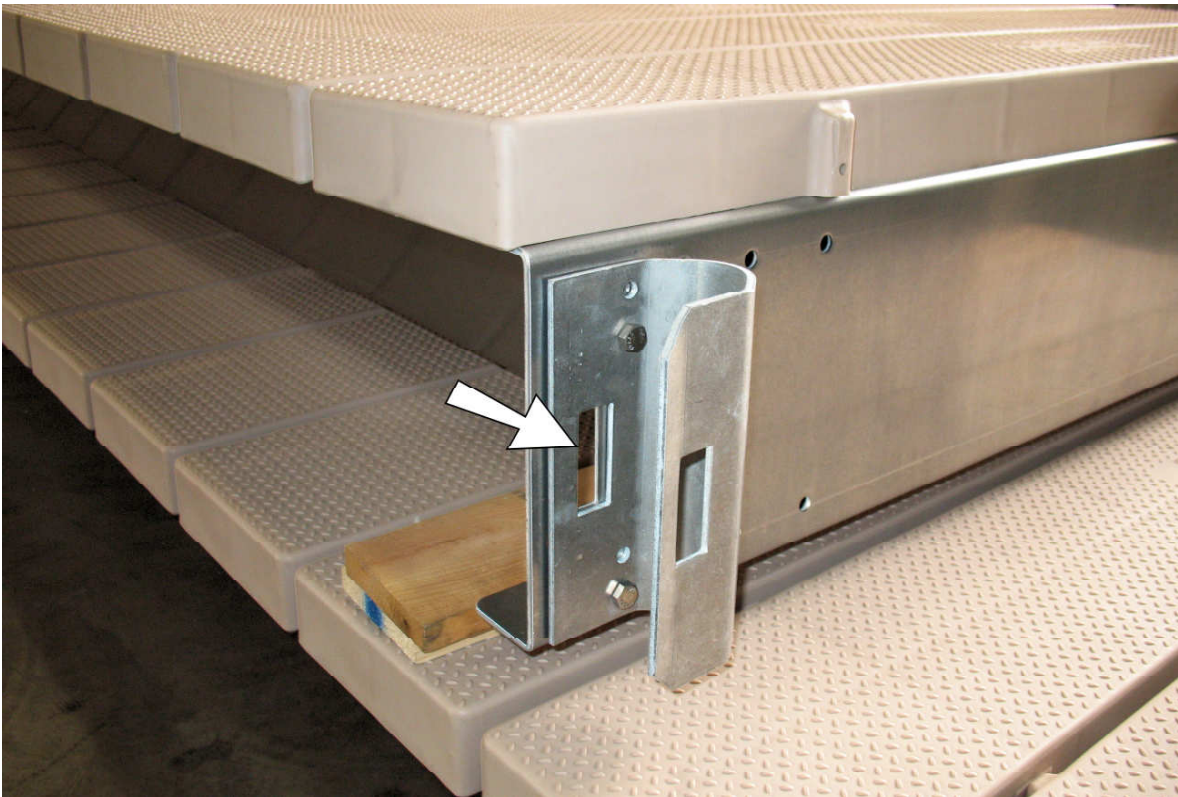
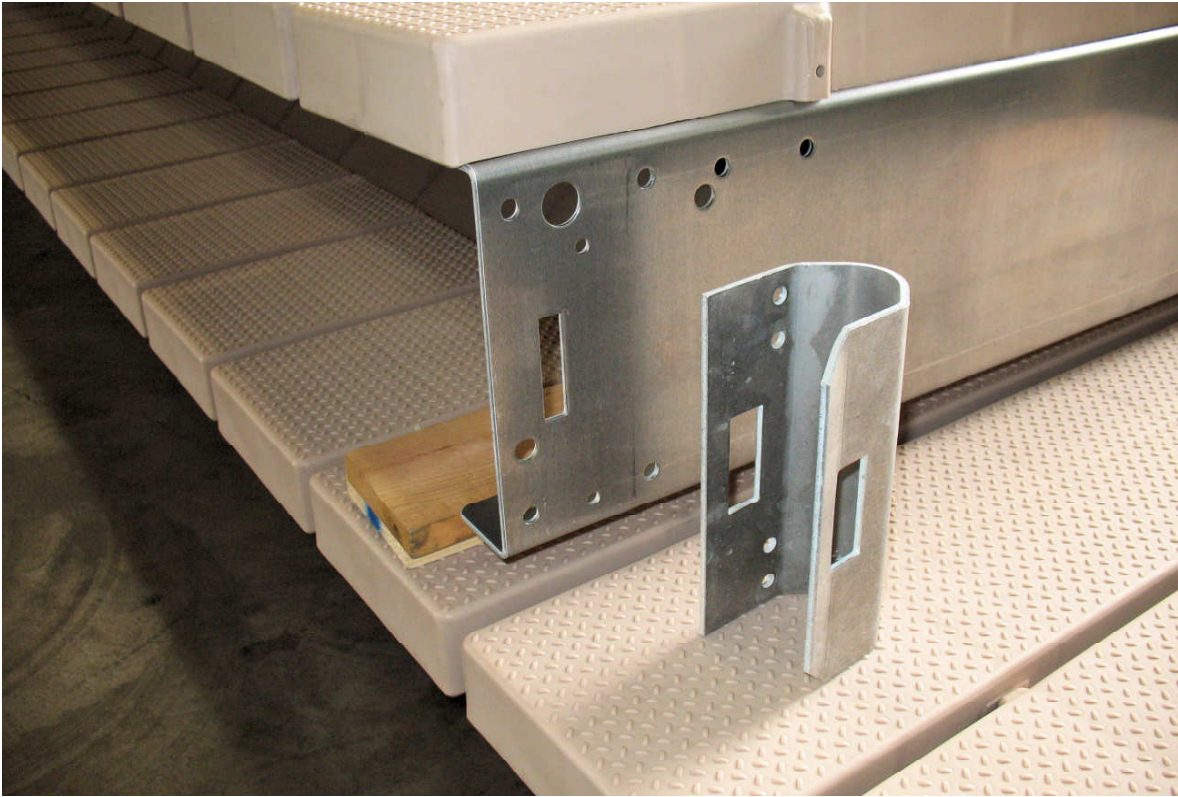


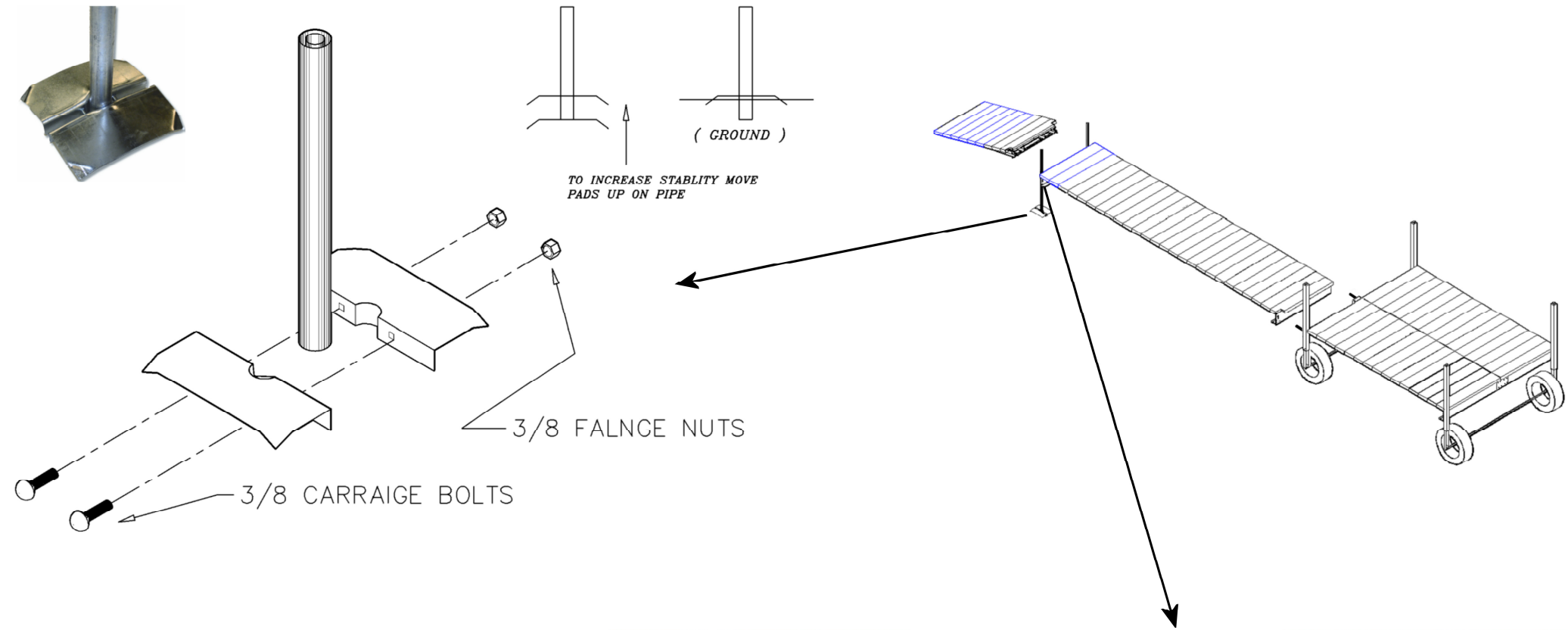
Post Bracket Instructions



Place the post bracket on the end channel as shown. Make sure the square hole on the post bracket & the end channel are aligned. Fasten with (2) 5/16" x 3/4" hex head bolts & flange nuts

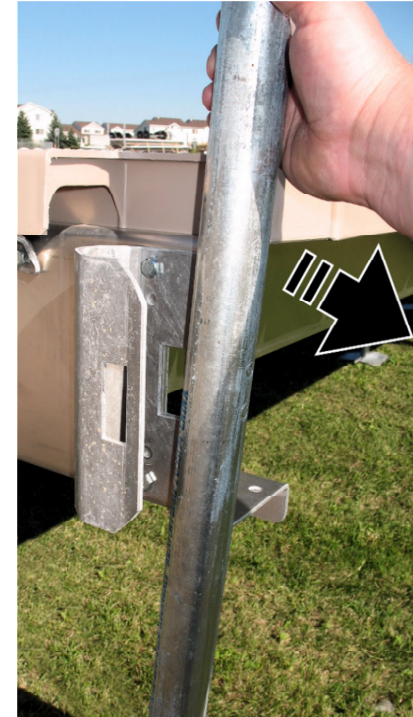
FOOT PAD INSTRUCTIONS

Post Bracket & Foot Pad Instructions

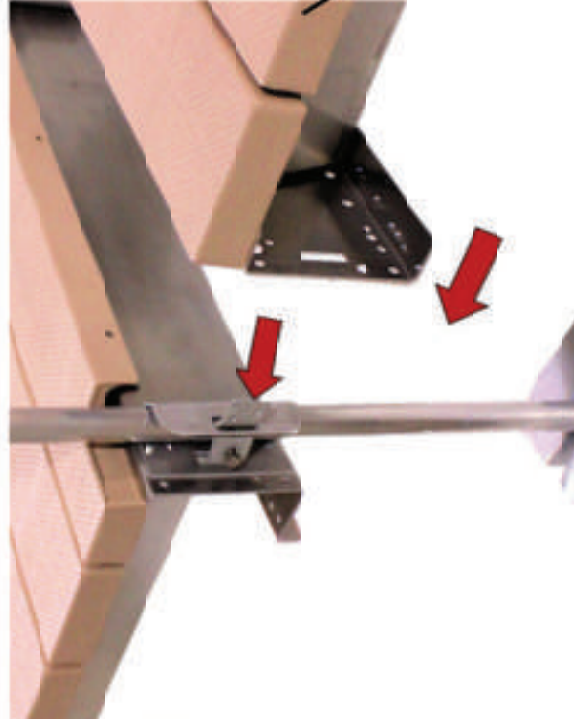
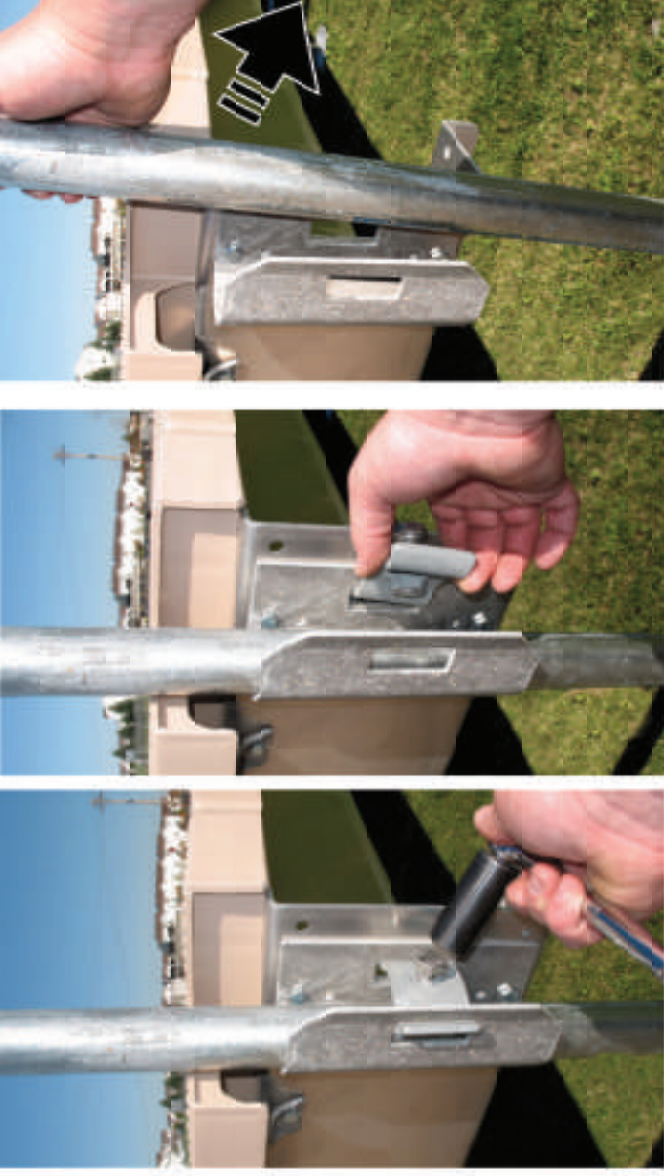


To install or remove post...

**Use a 3/4" wrench to
tighten or remove post bracket lug
This allows the post to be inserted
or removed from the side of the dock
even with the foot pad on the posts.**

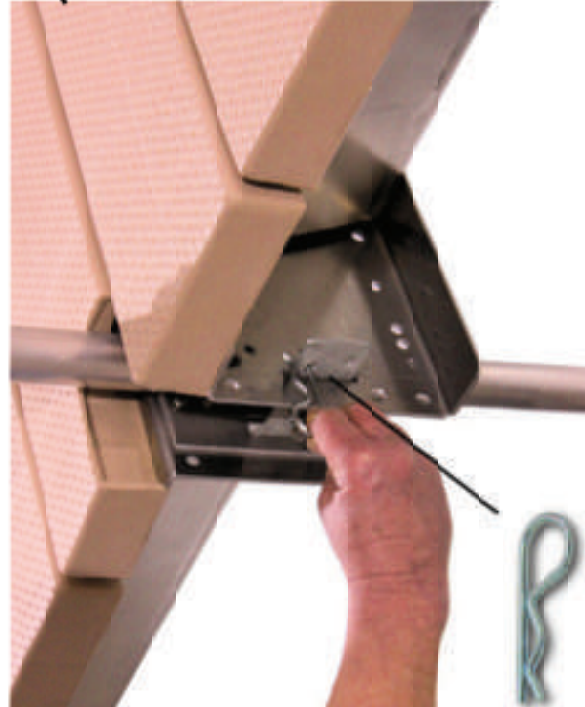
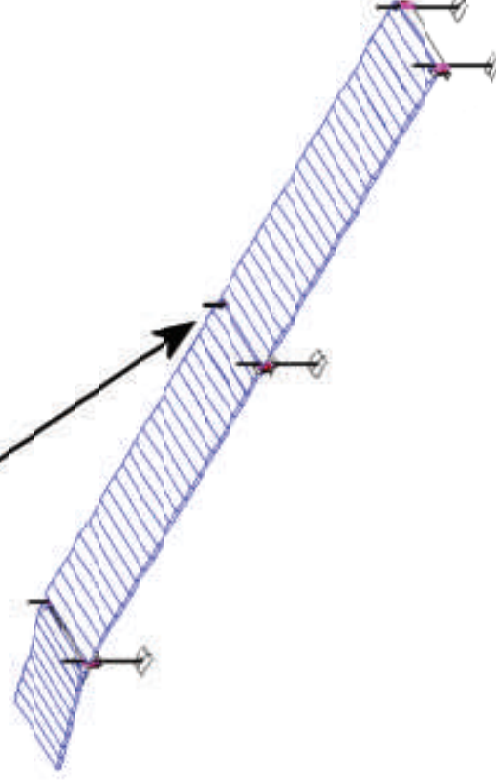
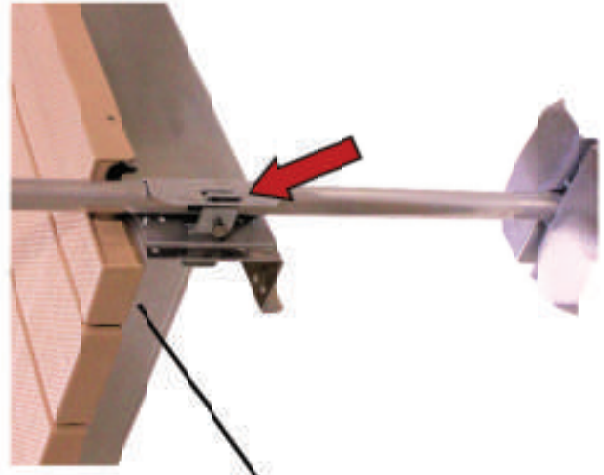


Post Bracket Instructions



On The Last Section...

Rotate lug so the long end is facing in. (to avoid hitting boats)



Connecting Sections Together

Reverse the lug so the longer end sticks out allowing the two sections to be plugged together and held together with a snap pin