

V-Dock Screw Drive Wheels Instructions

Shown as Fully Assembled

Page 1

651-464-3902

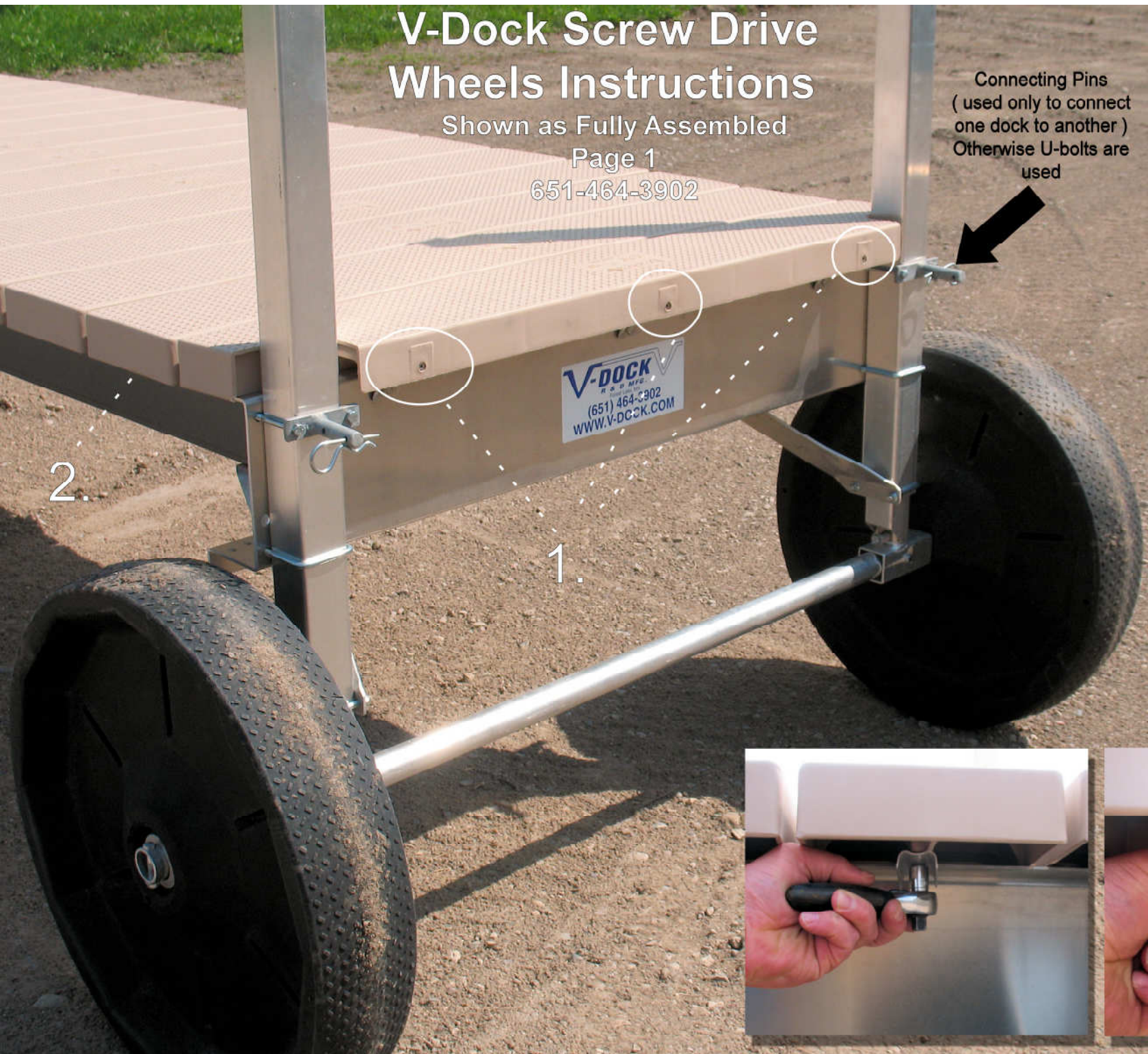
Connecting Pins
(used only to connect
one dock to another)
Otherwise U-bolts are
used

Putting the section
on saw horses will
make assembly easier

1. Remove last
piece of decking
by removing
end screws

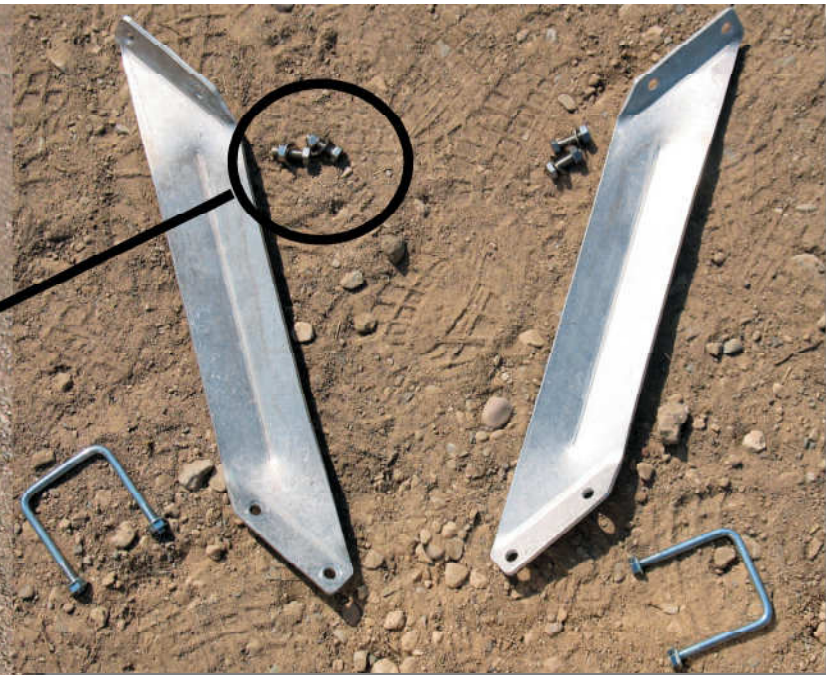
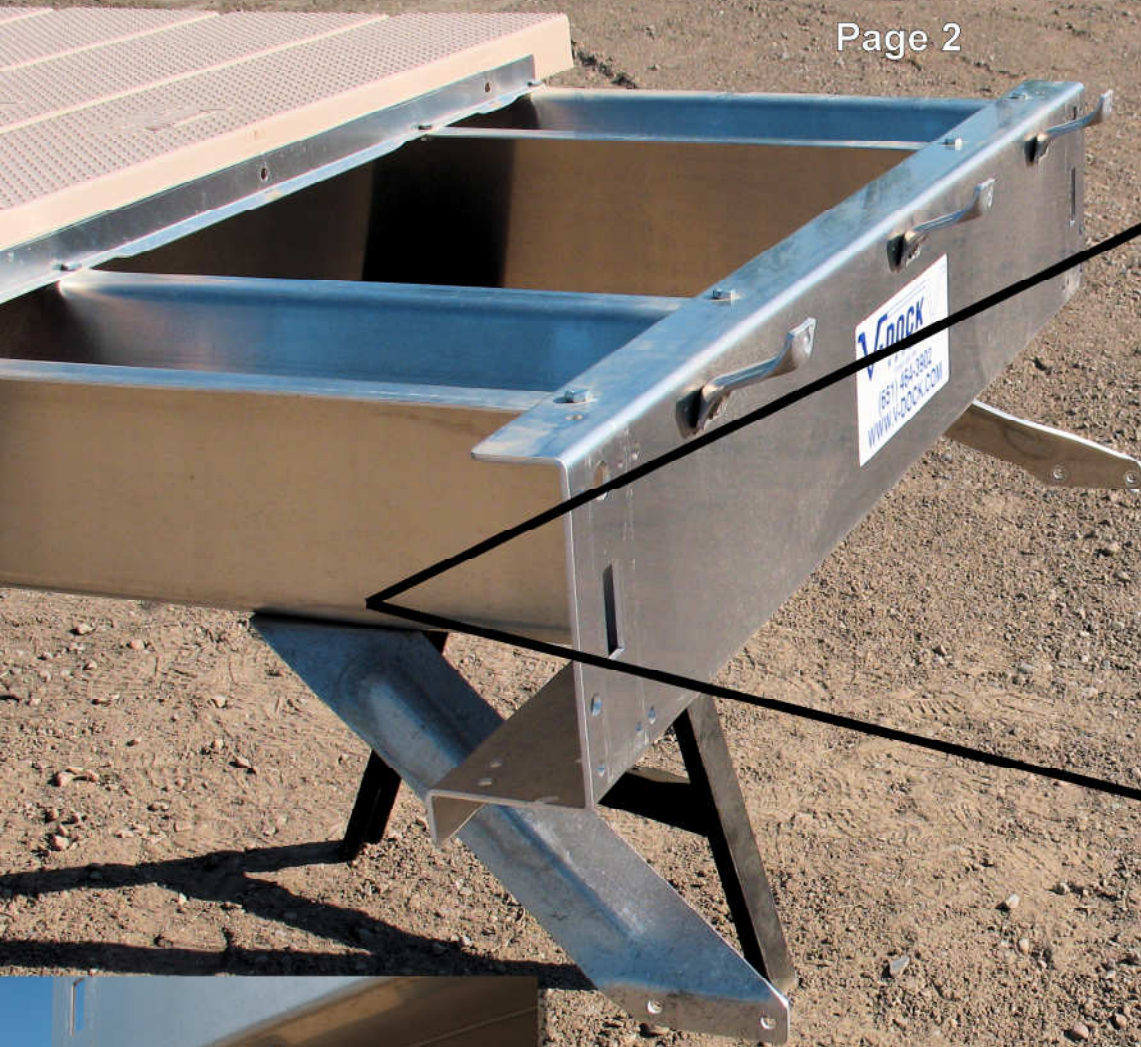


2. Loosen &
turn swivel clips
(one on each side)



V-Dock Screw Drive Wheels Instructions

Page 2



When the frame is exposed
then add the deep water gussets
& tighten with 5/16 x 1" bolts,
washers and nuts as shown



View from
the bottom

V-Dock Screw Drive Wheels Instructions

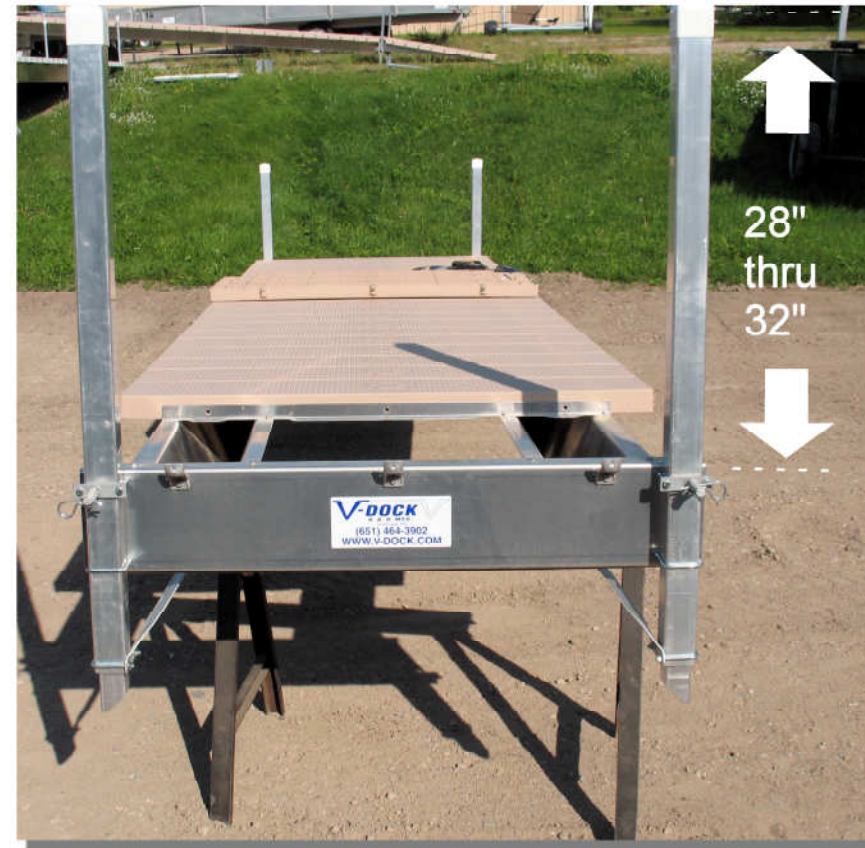
Page 3 Installing U-Bolts

*Loosely attach the U-bolts
as shown*

**Connecting 2 V-Docks
Together,** A connecting
pin is used to connect
one V-Dock to another
(the shorter end of the pin
must be facing the
outside end of the dock)



Position the screw drive legs 28" - 32"
above the frame



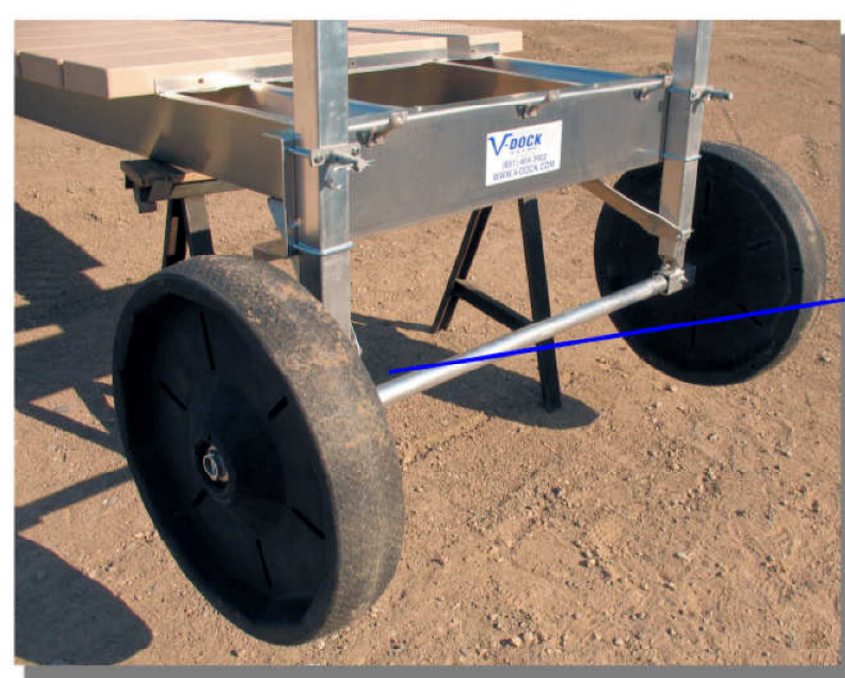
Tighten bolts & nuts

**The Very Last Dock
U-bolts are used.**
There is no
connection between
the dock sections

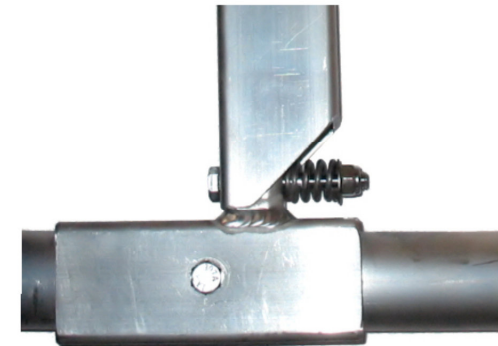
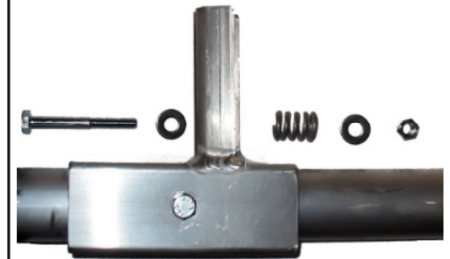
V-Dock Axle Instructions



Slide axle into bottom of legs and attach with a spring bolt & lock nut



Tire removed to show clarity



Note: tighten the lock nut so some of the threads just go beyond the lock nut (leaving the spring flexible)

The same process is for the 8' wide and 12 wide axles