

## **INSTRUCTIONS FOR CUTTING THE TABS ON DECKING TO INSTALL SOME ACCESSORIES**

(Required for Cleats, Ladder, Stairs, Hangers, Canoe racks, Quick Grabbers, Moveable Bench and Moveable Bumper)



Tools Needed: Serrated steak knife and long regular screwdriver.



Identify slots where you want to install an accessory. Push the point of your knife through the tab where the plastic is thinnest along white dotted line in picture above.  
NOTE: Every two feet, there will be a metal strap that ties the framework together, you will NOT be able to cut tabs at these points.

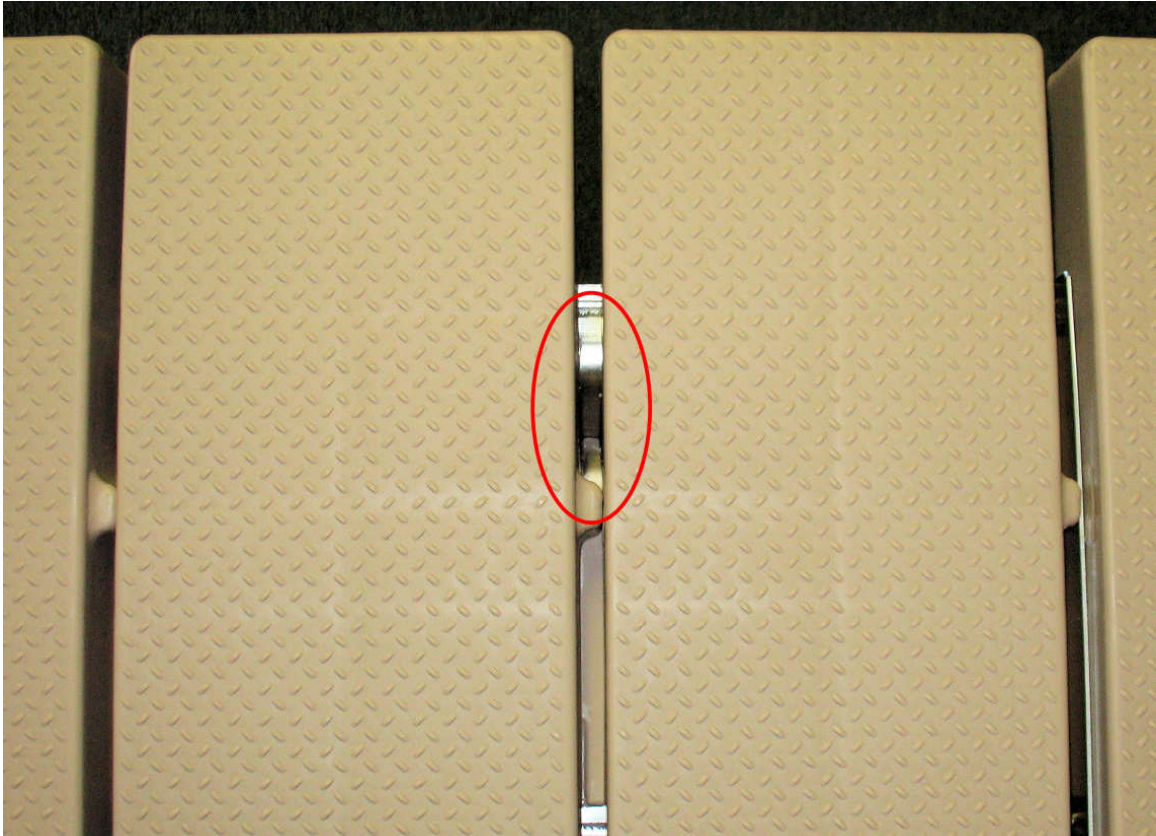


Saw towards to outside edge. At the end of the tab you will hit the V-Beam and need to saw a little on top of the V-Beam to finish cutting the tab.



Use regular screwdriver to push the tab down into the V-Beam. This opens up the slot so you can install accessories.





View of open tab allowing for installation of accessories.