

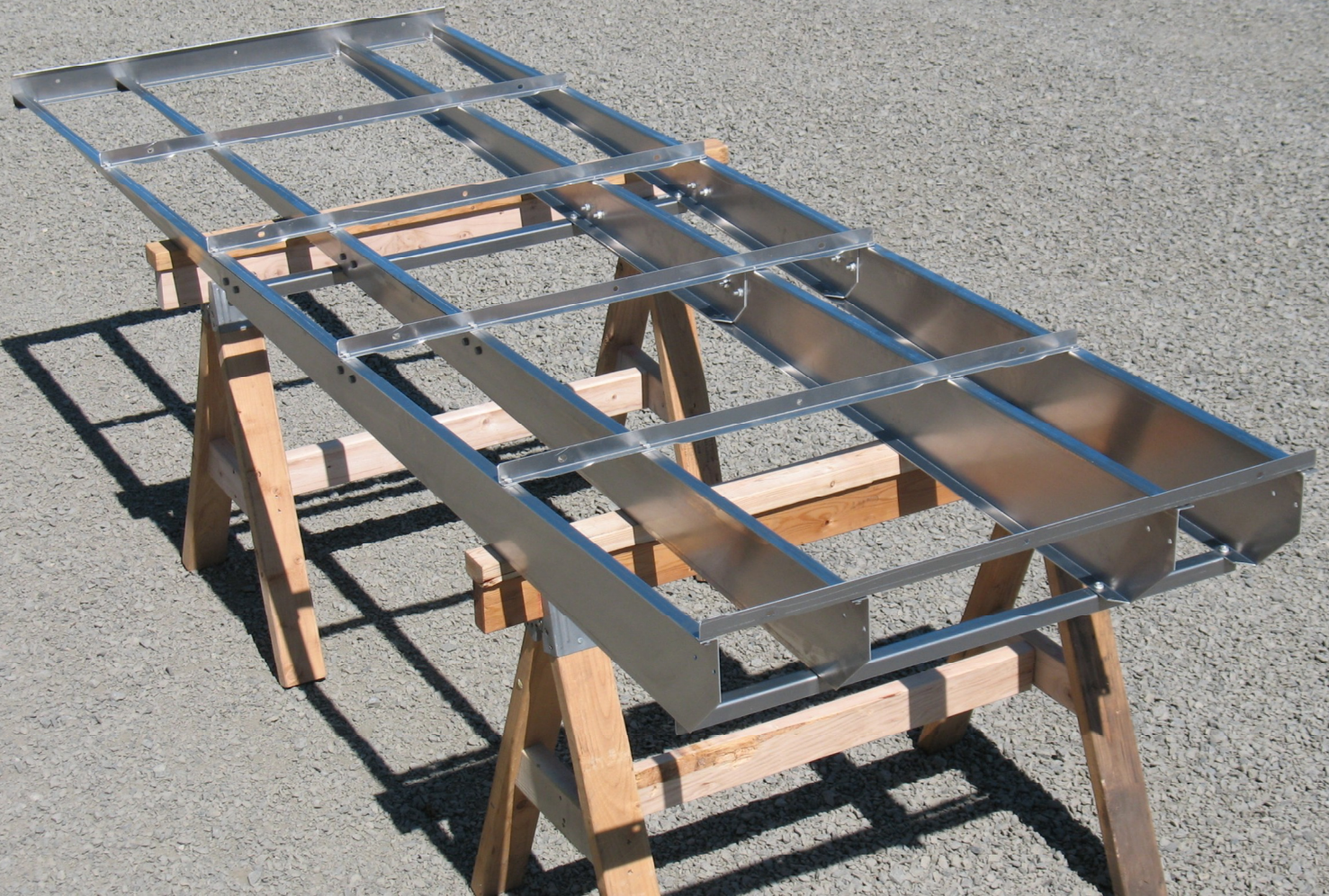
# 10' Ramp Instructions

## Recommend to the watch Video First

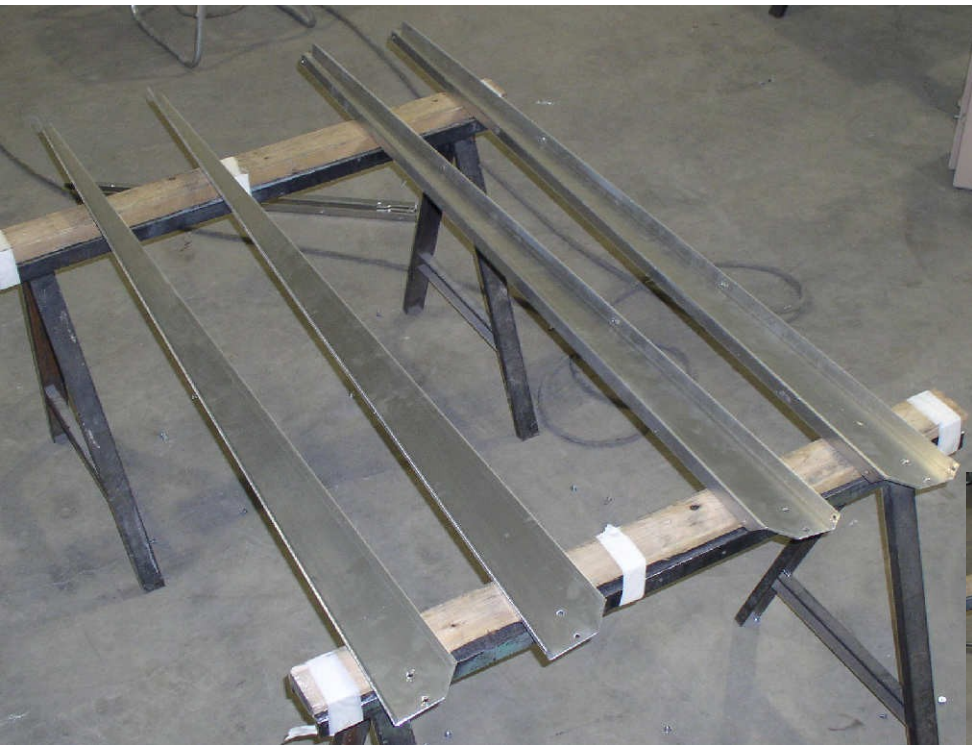
Scan for Video  
Overview



Step 1.

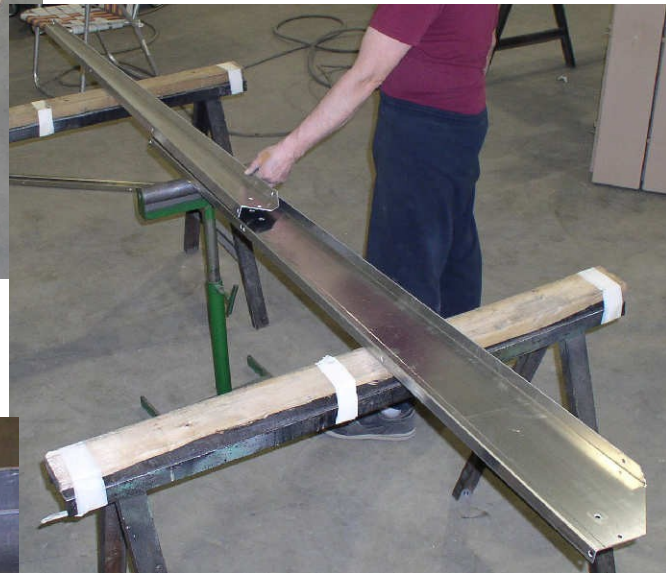




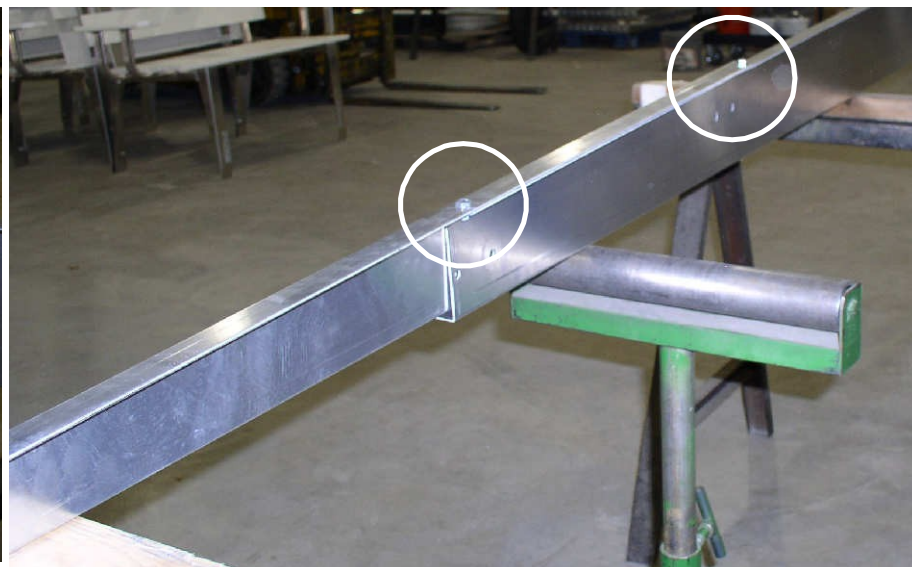


Lay the four 6' ramp beams as shown, note there are two sets of left and right beams

Overlap the 6 foot beam on top of the 10 foot beam has shown.



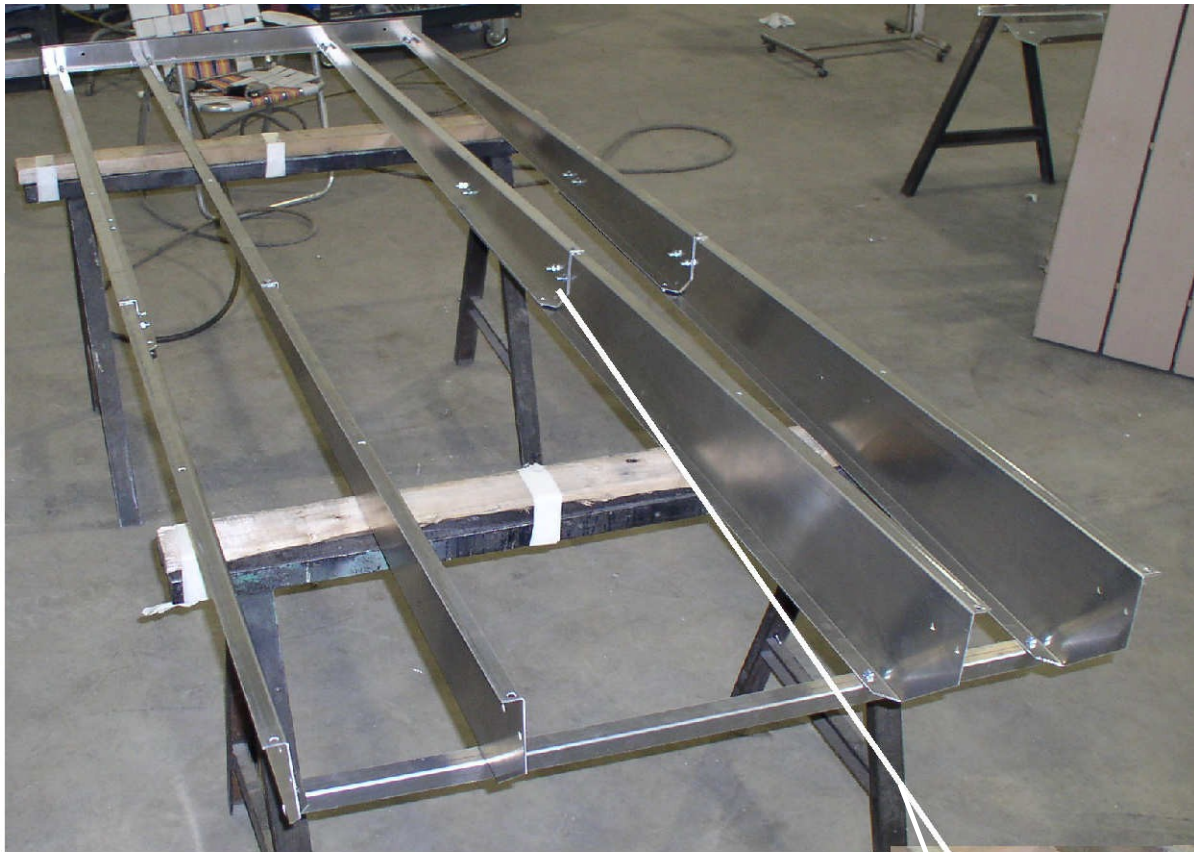
**Connect the existing ramp beam to the 10' extension.  
Fasten with two 1/4" bolts and flange nuts fasten on the top only.**





## Tightening guidelines

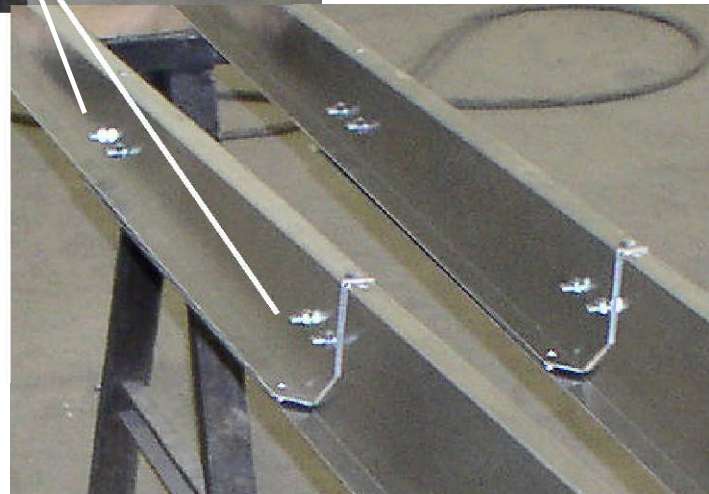
For 1/4" bolts and fasteners to 15- 20 foot-pounds  
For 5/16" bolts and fasteners to 20- 25 foot-pounds  
For 3/8" bolts and fasteners to 25- 30 foot-pounds



**Fasten the remaining beams together. Align 4 beams as shown refasten bottom member and starter plate.**

**Note: Beams are left & right beams.**

**Bolt frames together with four 5/16 hex head bolts & flange nuts**







**Fasten crossmembers as shown.**

Fasten 2 bottom supports only  
one is shown in the picture  
on the next page you will see two  
on the cover sheet or page 1

**Fasten ramp pins  
as shown**



**Reinsert panels as shown.**





**Refasten all bolts**