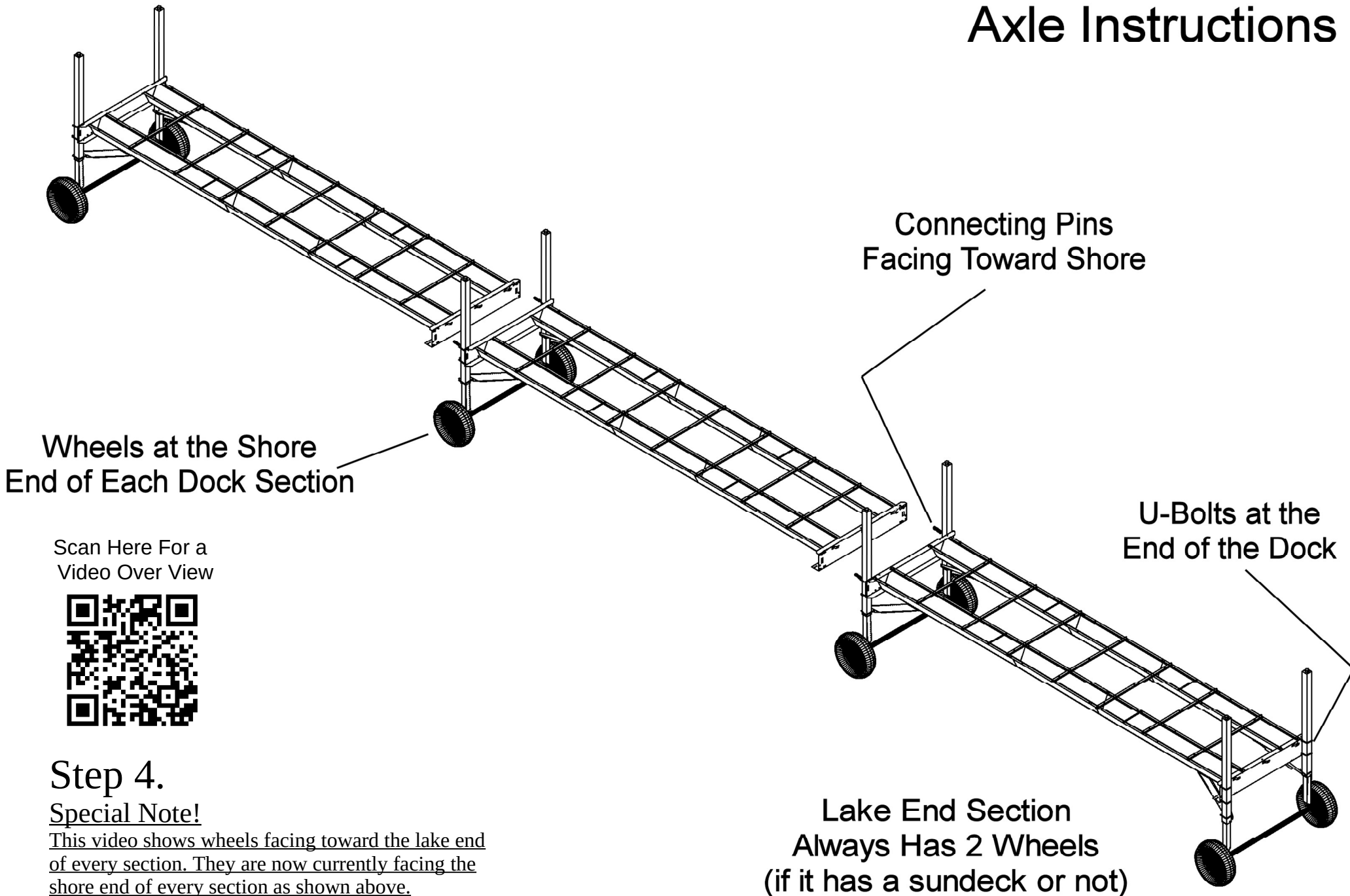


Shore End

4' Axle Leg & Axle Instructions



Step 4.

Special Note!

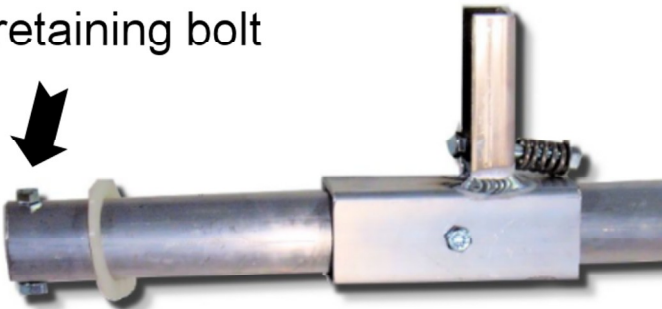
This video shows wheels facing toward the lake end of every section. They are now currently facing the shore end of every section as shown above.



4' Leg & Axle Instructions

Page 1

1. Remove
retaining bolt



2. Slide the tire
on as shown



3. Slide on plastic washer

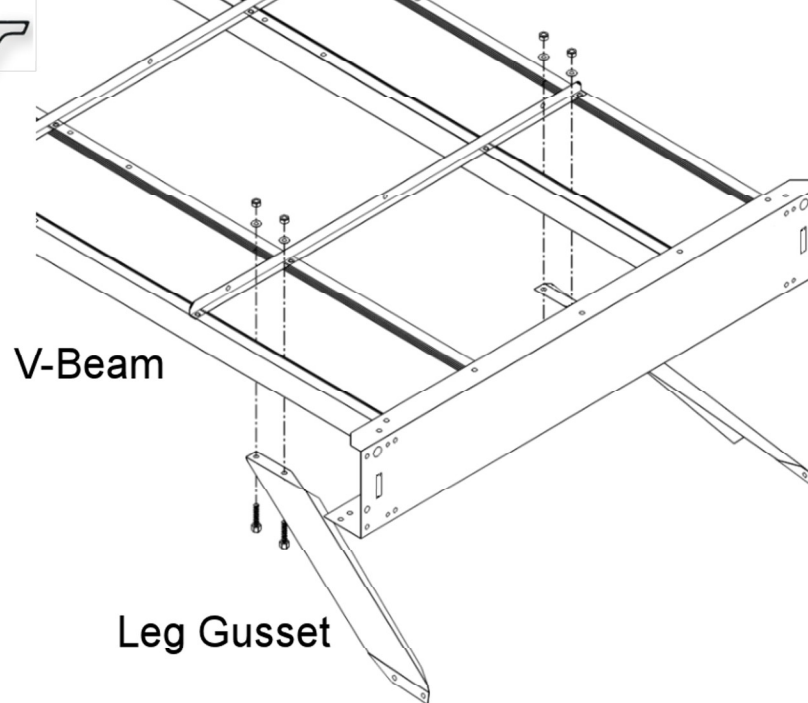
4. Re install the retaining bolt
& tighten make sure the plastic
washer is to the outside.





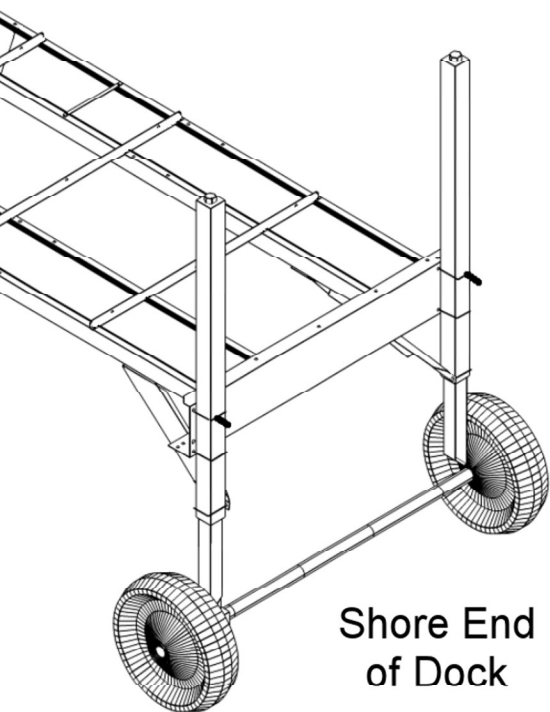
4' Leg & Axle Instructions

Page 2



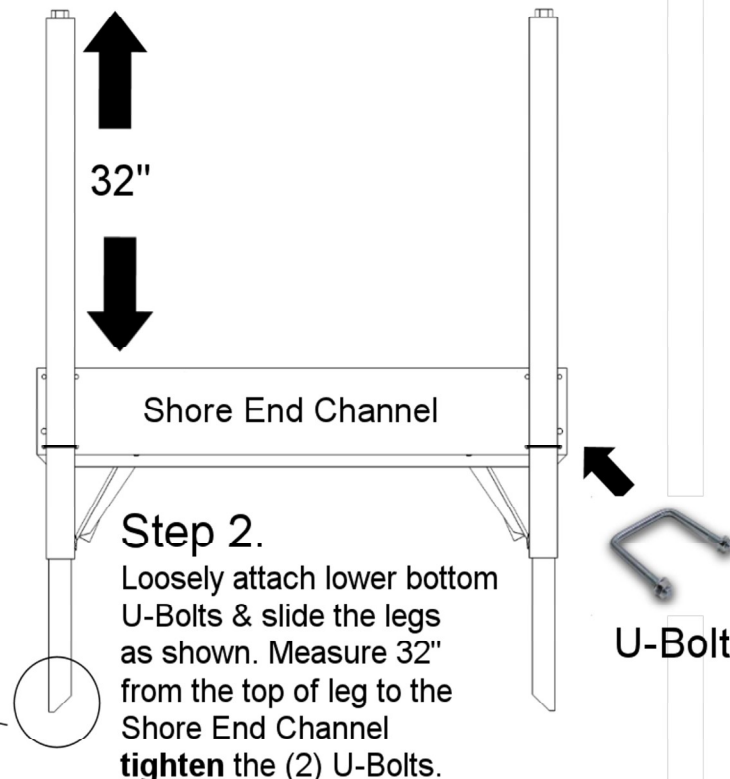
V-Beam

Leg Gusset



Shore End
of Dock

Note: the
angle of the
leg is
facing out



32"

Shore End Channel

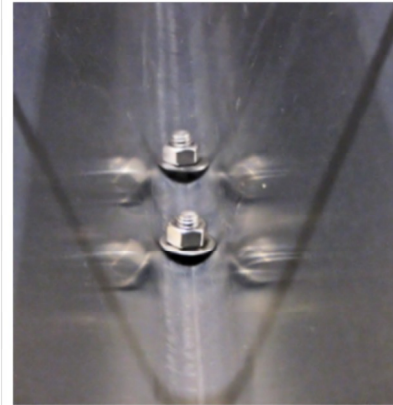
Step 2.

Loosely attach lower bottom
U-Bolts & slide the legs
as shown. Measure 32"
from the top of leg to the
Shore End Channel
tighten the (2) U-Bolts.

U-Bolt

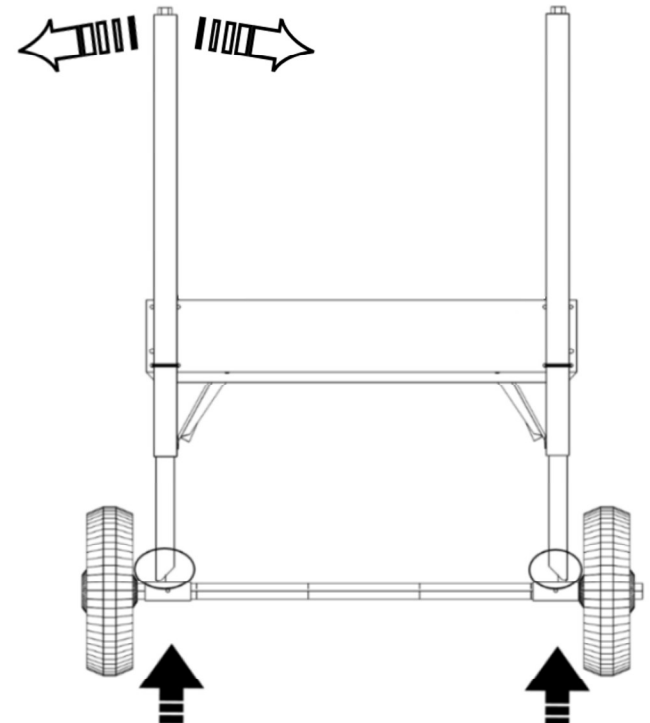
Step 1.

Insert (2) 5/16" x 1" hex head bolts &
washer and nuts through the Leg Gusset
and V-Beam. Leave the bolts loose for now.
Repeat on the other side.



Step 3.

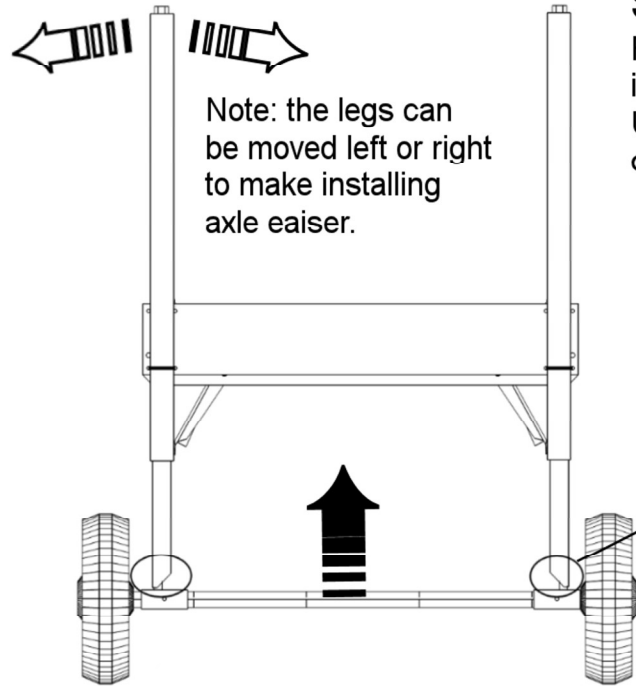
Slide the 4' wide axle into the bottom of the
legs as shown. Note the legs can be moved
left & right to make installing axle easier.





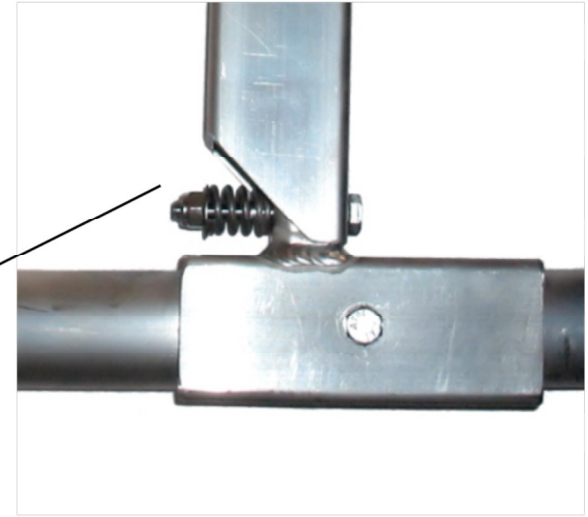
4' Leg & Axle Instructions

Page 3



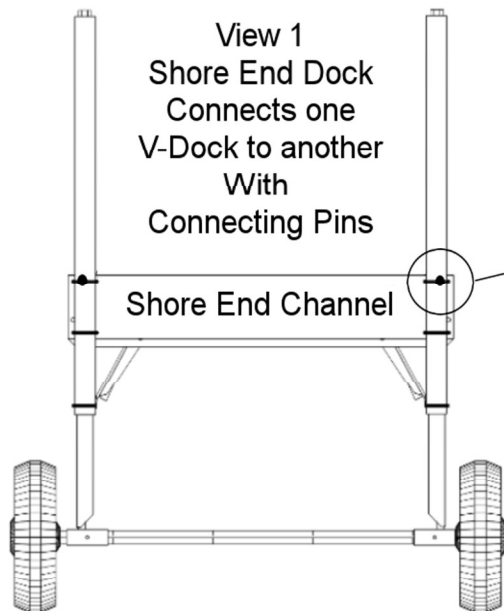
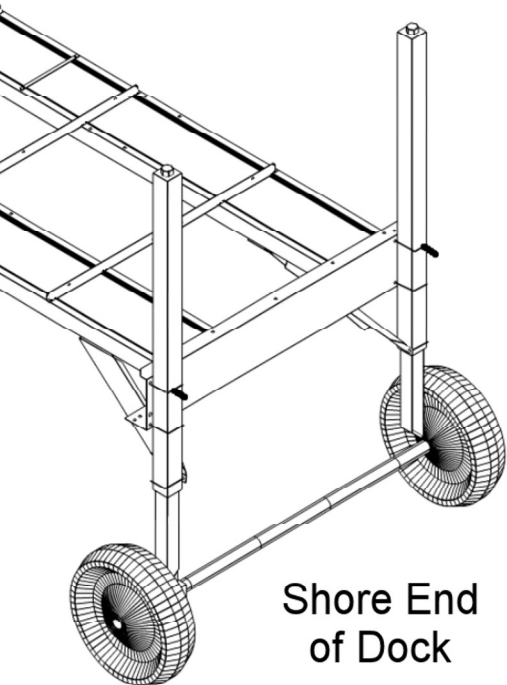
Step 4.

Remove the spring bolt assembly and slide the 4' wide axle into the bottom of the legs as shown. Using (2) 1/2" wrenches tighten the lock nut so some of the threads goes beyond the nut. (leaving the spring flexible)

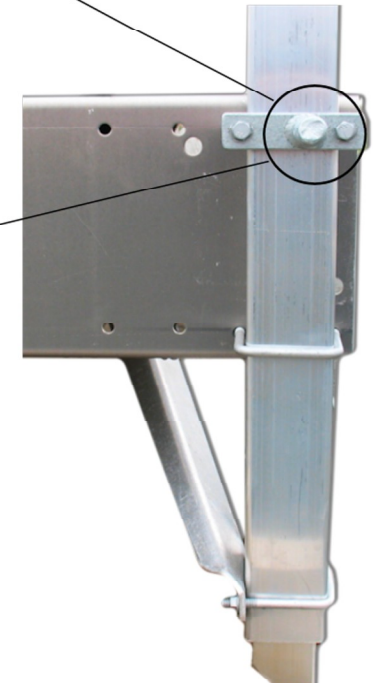


Step 5.

Loosely install (2) U-Bolts to connect the bottom leg gusset & (2) connecting pins with (2) 5/16" x 3 1/2" head bolts and flange nuts. **Pins is off-set towards the outside side out.**



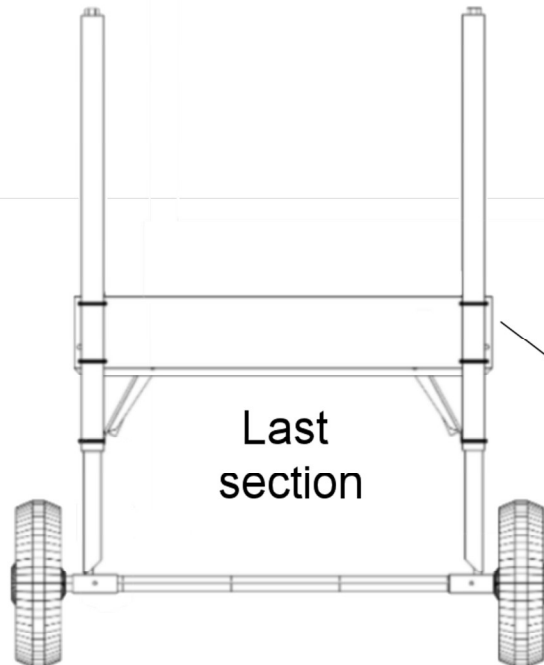
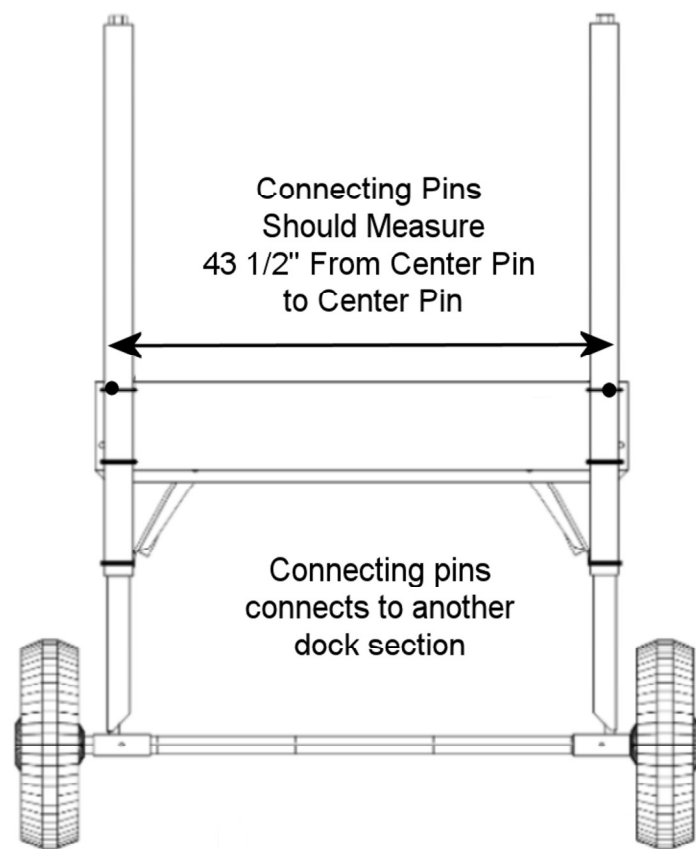
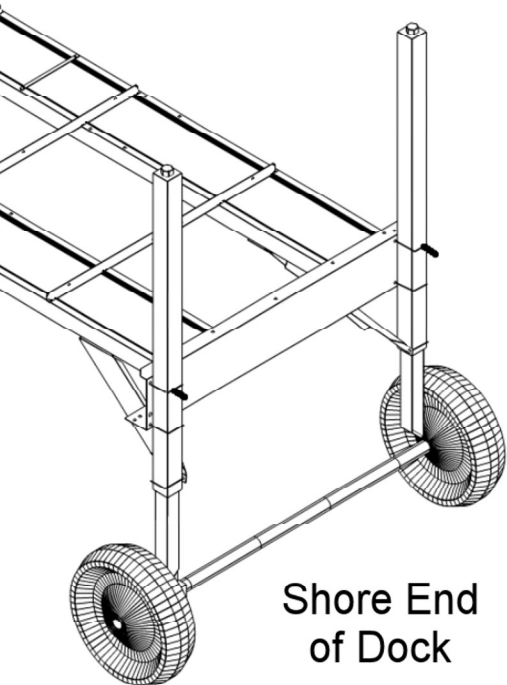
Connecting Pin





4' Leg & Axle Instructions

Page 4



Step 6.

Tighten the U-Bolts and the connectin pin bolts, make sure the connecting pins measure 43 1/2" from center pin to center pin. Note if you have a 4' wide section that does not connect to another dock section then a connecting pin is not needed a U-Bolt will be used in its place.

**4' Leg & Axle
Instructions is complete**