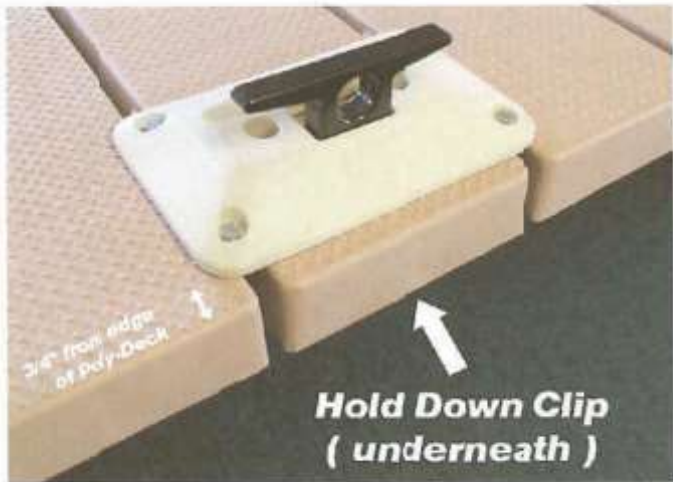


Safety Cleat Installation Instructions



Step 1. You can place your safety cleat wherever there is a hold down clip. That's every 2' along the dock. Make sure the label on the Safety Cleat shows "Direction Of Pull" is facing toward edge of dock.



Step 2. Loosen the hold down clip with a 7/16 socket wrench then turn the clip 90 degrees. Now you can lift up on the poly deck to making it able to tow.

This will not harm the dock.



Step 3. Place cleat off the edge of the dock, next place (2) 1/4" x 3" hex head bolt & washers through cleat as shown. Install cleat clip under decking and loosely hand tighten with a 1/4" flange nut.

Step 4. Slide cleat toward center of dock until cleat is 3/4" away from the edge of the Poly Deck.

Repeat fastening the remaining 2 cleat clips shown in Step 3



Step 5. Tighten the 4 bolts on the safety cleat firmly with a 7/16" socket wrench. Turn the hold down clip back 90 degrees and tighten.

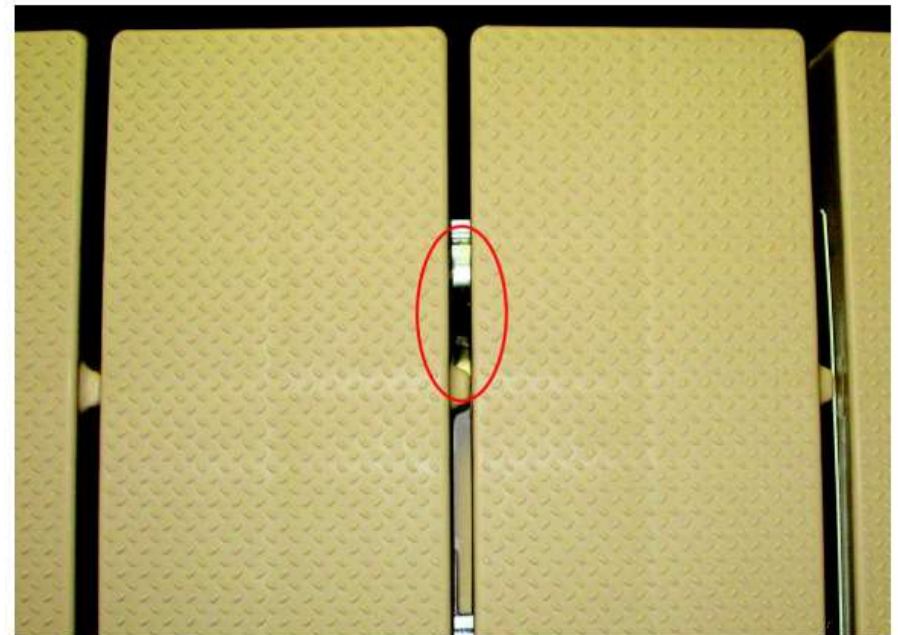


Saw towards to outside edge. At the end of the tab you will hit the V-Beam and need to saw a little on top of the V-Beam to finish cutting the tab.



Use regular screwdriver to push the tab down into the V-Beam. This opens up the slot so you can install accessories.

Note: every 2 feet there is a metal strap / cross member that you Cannot cut through this is the structural part of the dock frame.



View of open tab allowing for installation of accessories.